



INSTRUCTIONS

-J02968

REV. 08-3-2004

Kit Number 90342-04 and 90598-04

SPORTSTER LEATHER SADDLEBAG KITS

General

These kits are designed for installation on 2004 and later XL Model Motorcycles.

These kits can be installed on 1994 to 2003 XL model motorcycles with installation of Hardware/ Turn Signal Relocation Kit, Part Number 68485-04 which must be purchased separately.

WARNING

Do not exceed 7 lbs (3.17 kg) maximum load in each saddlebag. Additional weight can affect a motorcycle's stability, handling characteristics, and safe operating speed which may lead to an accident resulting in death or serious injury.

NOTE

A pick tool (Snap-on TT600-3) will be required for removing and reinstalling a multi-lock amp connector.

NOTE

A Service Manual for your vehicle is available from any Harley-Davidson Dealer.

NOTE

See the Service Parts Illustration for a list of the items contained in this kit.

WARNING

The rider's safety depends upon the correct installation of this kit. Use the appropriate service manual procedures. If the procedure is not within your capabilities or you do not have the correct tools, have a Harley-Davidson dealer perform the installation. Improper installation of this kit could result in death or serious injury. (00333a)

WARNING

To prevent accidental vehicle start-up, which could cause death or serious injury, disconnect negative (-) battery cable before proceeding. (00048a)

1. Refer to the Service Manual and follow the instructions given to remove the seat and disconnect the negative battery cable. Retain all seat mounting hardware.
2. Properly support motorcycle under frame with stand or suitable blocking to prepare for addition of saddlebags. Support rear wheel to prevent it from falling when rear shock absorbers are disconnected in the following step.
3. See Figure 1. Disconnect the rear shock absorbers from the swing arm by removing bolt (1), washer (2) and nut (4) from the shock absorber (3). Repeat on opposite side of the motorcycle.
4. Carefully lower rear wheel enough to access the inside of the rear fender.

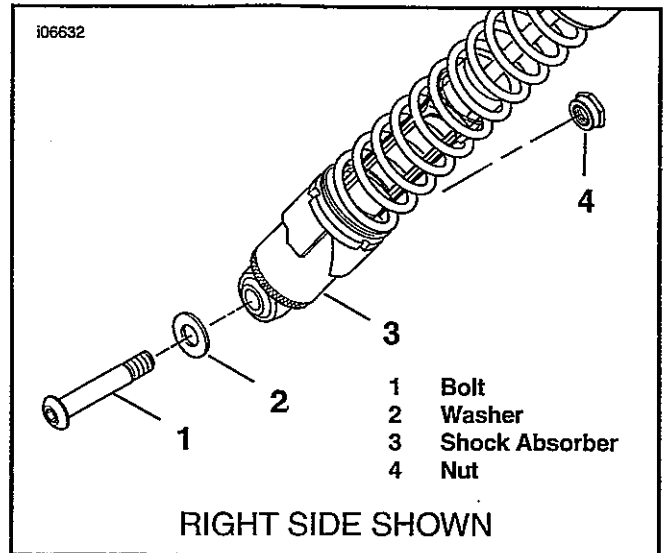


Figure 1. Rear Shock Absorber

5. See Figure 2. It is necessary to remove the taillight lens to access the Amp Multi-lock connector. Unplug the connectors for each turn signal and push them down and through the opening in the tail light and fender.
6. See Figure 2. Remove the front and rear button head screws (1), two locknuts (2) and under fender clip nuts (3) from the left and right rear-fender support covers. Discard all but two button head screws and two locknuts.

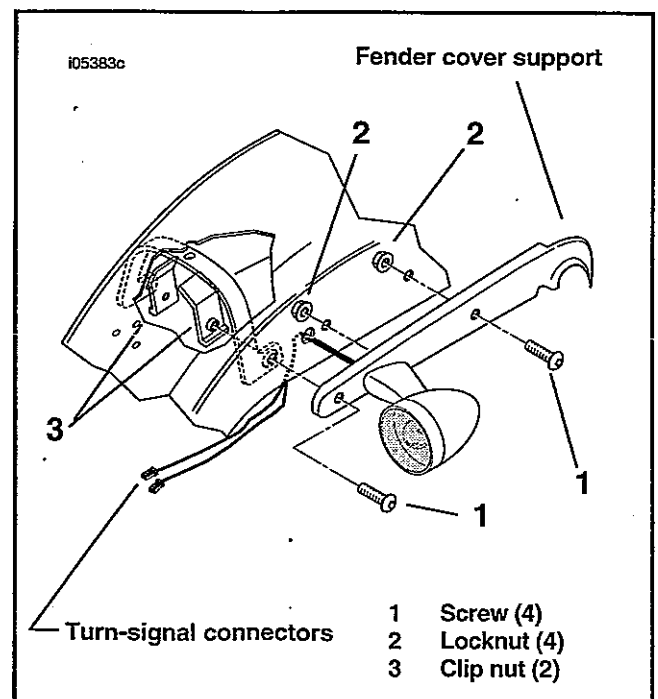


Figure 2. Rear Fender Support Removal

7. Take note of how rear turn signal wire is routed (for later rerouting).
8. Carefully pull the turn-signal assemblies (left and right) away from the fender support covers pulling the turn signal wires out of the holes in the sides of the fender.

Rear Turn Signal Relocation

NOTE

Rear turn signals must be relocated before saddlebags can be installed.

9. See Service Parts Illustration (1 of 2). Using a small piece of tape, tape spacer (15) from kit unto frame over hole from which rear turn signal stud was removed.
10. Remove turn signal stud from turn signal housing.
11. **Models with sissy bars**, reinstall sissybar sideplate between fender and fender support cover.
12. See Service Parts Illustration. (1 of 2) From the inside of the fender, insert a 5/16-18 x 4.1 inch bolt (1) through rear most hole in fender, through fender support and cover, and out through the hole at the narrow end of the rear relocation pad (6). Place Loctite® #242 (blue) on the threads of the mounting bolt. Loosely arrange turn signal housing and stalk on mounting bolt, running the lamp wire through the center hole in rear relocation pad, along channel on the inside of the pad and through the third hole from the rear in fender support cover.
13. Tighten bolt into turn signal housing to 132-216 in-lbs (14.9-24.4 Nm). Firmly pull lamp wire through fender support.
14. Reinstall the stock button head screw and locknut saved in Step 6, and tighten to 24–27 ft-lbs (33-37 Nm).
15. Repeat steps 9 through 14 for opposite side of motorcycles.

Butt-Splice Connections

NOTE

After the rear signals are relocated, the stock turn signal wires will not reach the connectors under the tail light lens. The wires with the terminals supplied in the kit will be spliced onto the stock wires.

16. See Service Manual Instructions for removal of the Amp Multi-lock connectors from the stock turn signal wire.
17. Cut the terminals from the ends of the turn signal wires. Cut away approximately 2 inches (5.0 cm) of the black conduit covering the end of the wire pair.
18. Strip a 3/8 inch (9.5 mm) section of the insulation from the cut ends of the signal wires.

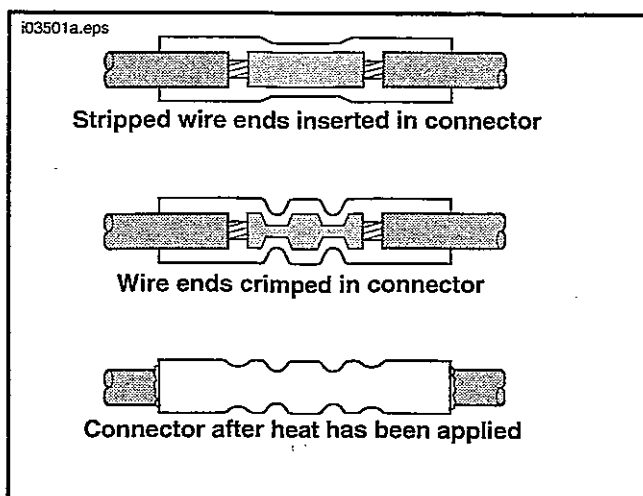


Figure 3. Installing the Sealed Butt Connectors

19. Determine the length of the additional wire required to reach the connectors under the tail light lens. Cut the wires with the terminals from the kit (one black and one violet) to the proper lengths. Strip a 3/8 inch (9.5 mm) section of the insulation from the cut ends of the wires.

NOTE

For proper fit of conduit (installed in a later step), make sure butt splices are staggered.

20. See Figure 3. Insert the two black turn-signal wires into opposite ends of a butt splice connector. Insert the two violet wires into opposite ends of a second butt splice connector.
21. Match the color of the butt splice connector with the color of the crimp cavity of the crimping tool (Kent-Moore Part Number HD-38125-8 or equivalent). Crimp the wires into the connector.

WARNING

Be sure to follow manufacturer's instructions when using the UltraTorch UT-100 or any other radiant heating device. Failure to follow manufacturer's instructions can cause a fire, which could result in death or serious injury. (00335a)

- Avoid directing heat toward any fuel system component. Extreme heat can cause fuel ignition/explosion resulting in death or serious injury.
 - Avoid directing heat toward any electrical system component other than the connectors on which heat shrink work is being performed.
 - Always keep hands away from tool tip area and heat shrink attachment.
22. Using the Ultra Torch UT-100 (Kent-Moore Part Number HD-39969), Robinair Heat Gun (HD-25070) with Heatshrink Attachment (HD-41183), or other suitable radiant heating device, heat the crimped splice to encapsulate the butt splice connection. Apply heat from the center of the crimp out to each end until the meltable sealant comes out of both ends of the connector.

Final Connection of Turn Signal Wires

23. Slide the conduit over the wire pair (staggering connectors), making sure it overlaps the stock conduit. Trim the excess, if necessary.
24. Reattach the connectors to the terminals. Route the connectors through the opening in the fender behind the tail lamp and plug it in.
25. Repeat steps 16 through 24 for the opposite side.
26. Reconnect negative battery cable.

⚠ WARNING

Be sure that all lights and switches operate properly before operating motorcycle. Low visibility of rider can result in death or serious injury. (00316a)

27. Turn ignition on and test for proper turn signal operation.

Saddlebag Installation

28. See Service Parts Illustration (2 of 2). Remove the rear shock absorber bolt. Position the .531 x .75 x .25 inch spacer (13) and the front saddlebag bracket attachment hole over the rear shock absorber bolt location. Secure with the 1/2-13 x 3.75 inch screw (11).
29. See Service Parts Illustration (2 of 2). Position the .325 x .75 x .25 inch spacer (14) and the rear saddlebag attachment hole over the second hole on the rear of the fender, fender support cover, and relocation pad. From the underside of the fender, insert a 5/16-18 x 3.00 inch screw (12) and secure with locknut (16). Tighten to 24–27 ft-lbs (33–37 Nm).
30. Tighten the front screw (11) to 21–27 ft-lbs (28.5–38 Nm).
31. See Service Parts Illustration (2 of 2). Assemble an isolator washer (18) onto an isolator bushing (19). Place a screw (21) through the bushing.
32. Place the screw and bushing assembly into the top hole inside the saddlebag back.
33. See Service Parts Illustration (2 of 2). Push a saddlebag isolator (20) over bushing with cone shape toward saddlebag.

34. Place saddlebag in position on bracket and insert the new screw into the bracket. Do not tighten.
35. Repeat steps 31 through 34 for remaining holes. With all isolators in place, tighten screws to 96–120 in-lbs (11–14 Nm).
36. Repeat steps 28 through 35 for the opposite saddlebag.
37. Raise rear wheel until the rear shock absorbers align with shock absorber mounting holes on the swingarm. Support the wheel to prevent it from falling during the following step.
38. See Figure 1. Attach rear shock absorber to swingarm by installing bolt (1), washer (2) and nut (3). Tighten bolt to 45–50 ft-lbs (61.1–67.9 Nm). Repeat step on opposite side of motorcycle.

NOTE

Two reflectors have been included with this kit to be mounted on the saddlebags.

⚠ WARNING

Federal Motor Vehicle Safety Standard (FMVSS) 108 requires motorcycles to be equipped with rear and side reflectors. Be sure rear and side reflectors are properly mounted. Low visibility of rider can result in death or serious injury. (00336a)

39. See Service Parts Illustration (2 of 2). Position the reflector (5) in the lower rear corner of the saddlebag and mark hole location.
40. See Service Parts illustration (2 of 2). Punch a hole in the saddlebag and mount the reflector using the pan head screw (4), washer (3) and locknut (2).
41. Repeat steps 39 through 40 for the opposite saddlebag.

⚠ WARNING

After installing seat, pull upward on front of seat to be sure it is in locked position. While riding, a loose seat can shift causing loss of control, which could result in death or serious injury. (00070a)

42. See Service Manual Instruction to install the seat.



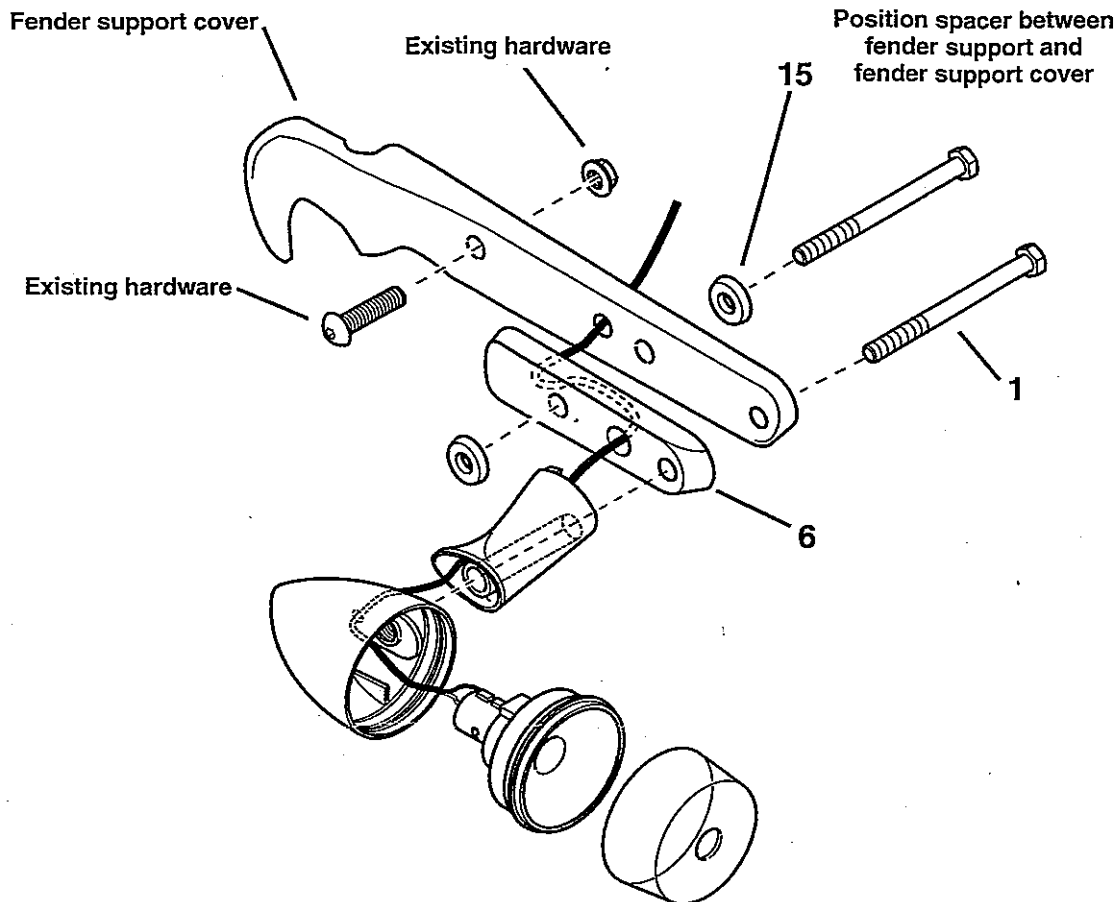
Service Parts

Part No. 90342-04 and 90598-04

Date 08/2004

Sportster Leather Saddlebag Kits (1 of 2)

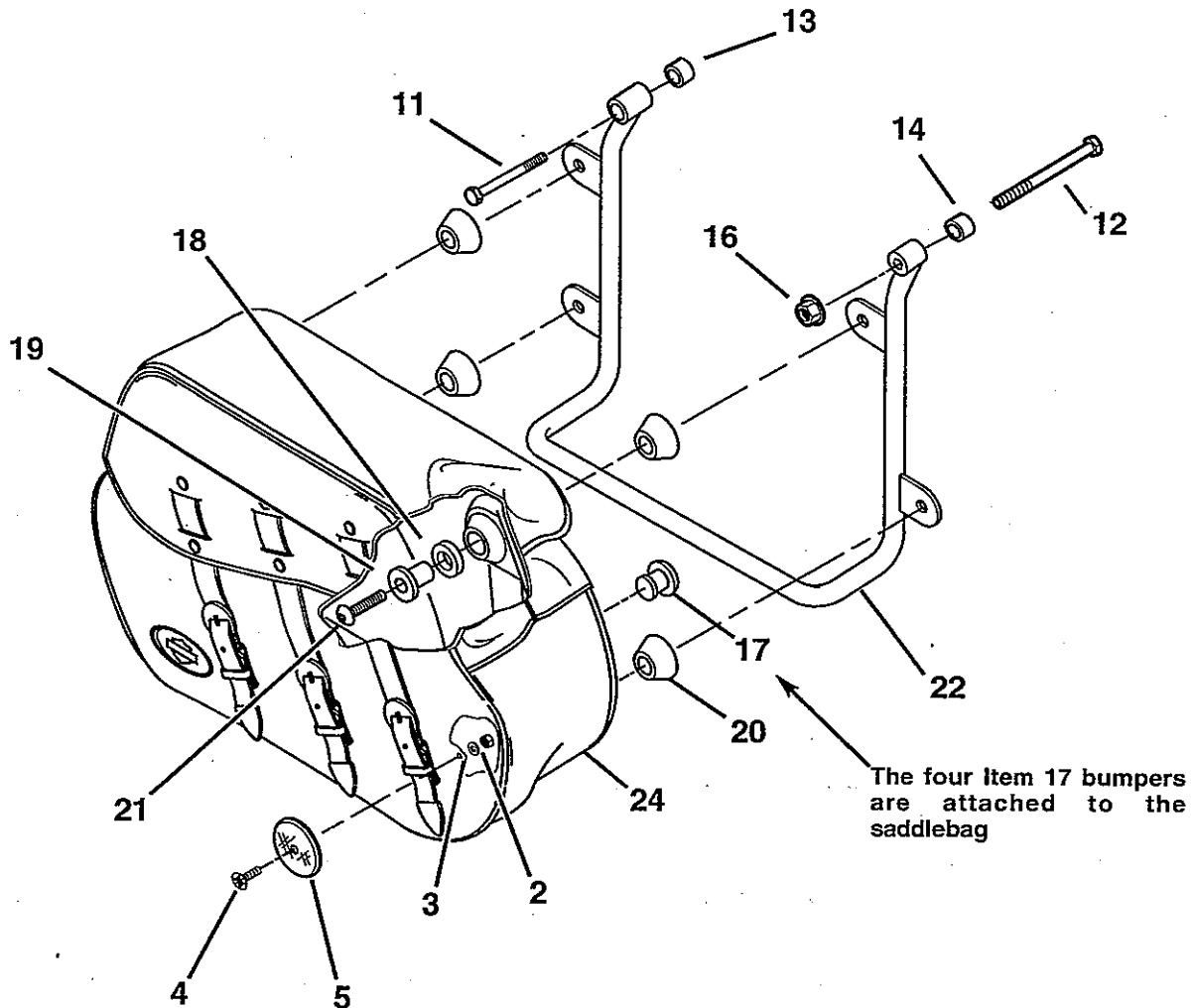
103945c



Item	Description	Part No.	Item	Description	Part No.
1	Screw, hex cap 5/16-18 x 4.1 in (2)	Not Sold	14	Spacer, .325 x .75 x .25 (2)	53034-04
2	Locknut #10-32 (2)	7626W	15	Spacer, .39 x .88 x .22 (2)	Not Sold
3	Washer #10 x 1/2 x 3/64 (2)	6716	16	Locknut, 5/16-18 (2)	7531
4	Screw, pan head, #10-32 x 5/8 (2)	2587	17	Bumper (4)	62123-66
5	Reflector, red (2)	59264-86	18	Isolator washer (8)	90678-94
6	Rear directional relocation pad (2)	68502-04	19	Isolator bushing (8)	90676-94
7	Wire, black, 18 AWG, 12" length w/ terminal (2) (not shown)	Not Sold	20	Isolator (8)	90677-94
8	Wire, violet, 18 AWG, 12" length w/ terminal (2) (not shown)	Not Sold	21	Screw, button head, 5/16-24 x 1.25 (8)	90578-94
9	Connector, pre-insulated, sealed splice (4) (not shown)	70585-93	22	Support, left	90608-96
10	Vinyl conduit, black, 12" length (2) (not shown)	Not Sold	23	Support, right (not shown)	90625-96
11	Screw, hex cap 1/2-13 x 3.75 (2)	3829	24	Saddlebag, left, for Kit 90598-04	90600-96A
12	Screw, hex cap 5/16-18 x 3.00 (2)	4375	24	Saddlebag, left, for Kit 90342-04	90303-98A
13	Spacer, .531 x .75 x .25 (2)	53035-04	25	Saddlebag, right, for Kit 90598-04	90605-96A
			25	Saddlebag, right, for Kit 90342-04	90304-98A
			26	Leather care kit (1) (not shown)	Not Sold



105992



Left Side Shown

Item	Description	Part No.
1	Screw, hex cap 5/16-18 x 4.1 in (2)	Not Sold
2	Locknut #10-32 (2)	7626W
3	Washer #10 x 1/2 x 3/64 (2)	6716
4	Screw, pan head, #10-32 x 5/8 (2)	2587
5	Reflector, red (2)	59264-86
6	Rear directional relocation pad (2)	68502-04
7	Wire, black, 18 AWG, 12" length w/ terminal (2) (not shown)	Not Sold
8	Wire, violet, 18 AWG, 12" length w/ terminal (2) (not shown)	Not Sold
9	Connector, pre-insulated, sealed splice (4) (not shown)	70585-93
10	Vinyl conduit, black, 12" length (2) (not shown)	Not Sold
11	Screw, hex cap 1/2-13 x 3.75 (2)	3829
12	Screw, hex cap 5/16-18 x 3.00 (2)	4375
13	Spacer, .531 x .75 x .25 (2)	53035-04

NOTE

Illustration shows a generic saddlebag style.

Item	Description	Part No.
14	Spacer, .325 x .75 x .25 (2)	53034-04
15	Spacer, .39 x .88 x .22 (2)	Not Sold
16	Locknut, 5/16-18 (2)	7531
17	Bumper (4)	62123-66
18	Isolator washer (8)	90678-94
19	Isolator bushing (8)	90676-94
20	Isolator (8)	90677-94
21	Screw, button head, 5/16-24 x 1.25 (8)	90578-94
22	Support, left	90608-96
23	Support, right (not shown)	90625-96
24	Saddlebag, left, for Kit 90598-04	90600-96A
	Saddlebag, left, for Kit 90342-04	90303-98A
25	Saddlebag, right, for Kit 90598-04	90605-96A
	Saddlebag, right, for Kit 90342-04	90304-98A
26	Leather care kit (1) (not shown)	Not Sold